

AERIALFILMING



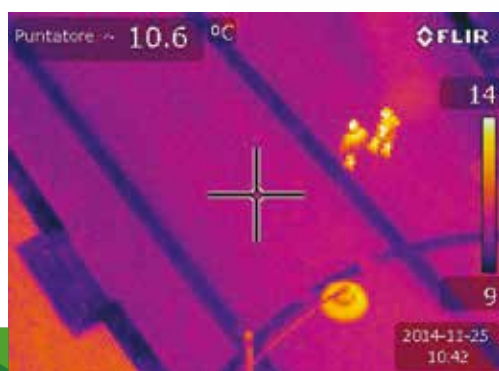
AERIALMAPPING



PRECISIONFARMING



AERIALSURVEYING



3D RECONSTRUCTION



Italdron

ITALDRON SRL
Via Faentina 175/A (Centro Mir)
48124 - Fornace Zarattini (RA)
Italy

Tel: + 39 0544 771407
E-mail: info@italdron.com

WWW.ITALDRON.COM

www.geozone.com

GEOZONE
GEOMATICS

Geozone AG, Oberdorfstrasse 8, CH-8153 Rümlang
Tel: +41 (0)44 817 01 21, Fax: +41 (0)44 817 01 22
www.geozone.ch, Email: info@geozone.ch

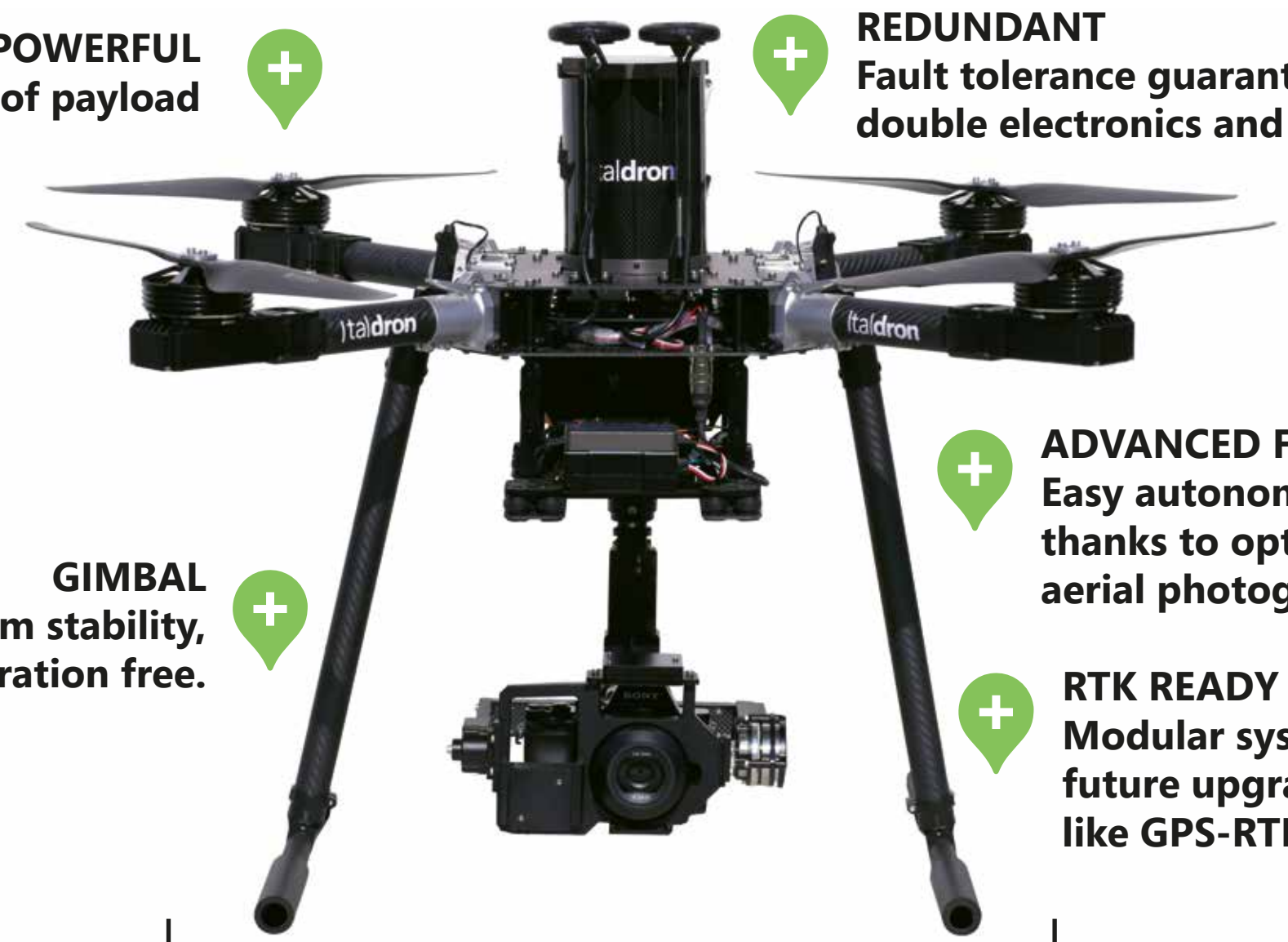
GEOZONE
GEOMATICS

Italdron
another point of view

HIGHONE4HSEPRO



The HIGHONE 4HSE PRO has been developed to provide the best performances both in video shooting and survey through stability, reliability and high safety standards.



POWERFUL
Up to 2,5 Kg of payload

SAFE
Automatic safety parachute

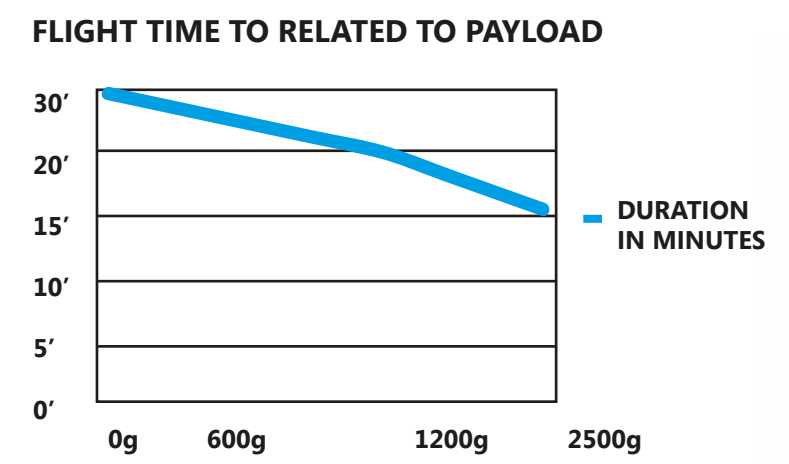
REDUNDANT
Fault tolerance guaranteed by double electronics and sensors

GIMBAL
Maximum stability, 60° rotation, vibration free.

ADVANCED FLIGHT
Easy autonomous flight planning thanks to optimised tools for aerial photogrammetry

RTK READY
Modular system ready for future upgrades, like GPS-RTK positioning

SPECS
 Payload: 2,5 Kg
 Max. takeoff weight (MTOW): 9Kg
 Dimensions: 72x72x72 cm
 Gimbal dimensions: 30x23x21 cm
 Operating temperature: -5° +40°
 Operating humidity: 0% -100%
 Wind resistance: 13 m/s
 Continuative flight time: 15' – 30'
 Data Link: 2,4 Ghz digitale con frequency hopping
 Max. height: 150 metres (electronically limited)
 Max. range: 1,5 Km (LOS)
 Max. speed: 10 m/s
 Vertical speed: 5 m/s (electronically limited)



COMPACT
70x70 cm of space requirement

- Compact and versatile platform, customizable for different applications.
- Main professional sensors for survey, video or photogrammetric uses are supported.
- Survey grid with geotag integrated tools.
- Authority approval according to ENAC regulations. A flight manual is provided.
- Fast tech-support.
- Proven platform on flying training courses.

SUPPORTED PAYLOAD

- PANASONIC GH4
- SONY ALPHA 7S / R
- BLACKMAGIC POCKET/MICRO
- CANON EOS 550D
- THERMAL CAMERA
- MULTISPECTRAL CAMERAS



- UAV**
- Four high efficiency brushless motors and carbon propellers
 - Fast folding arms, carbon fiber frame for easy transport
 - Redundant auto pilot provided with internal inertial platform, GPS, barometer, Data link equipped with:
 - RTH (return to home) with auto landing, auto take-off and position hold functions.
 - GPS Waypoints configuration for autonomous flight missions.
 - Flight planning software to perform "grid and survey" missions for georeferenced aerial photogrammetry.
 - Telemetric Data link for flight information and remote control.
 - Flight mission recording stored on memory card.

- GIMBAL**
- Three axes stabilized – remote controlled Gimbal developed for a number of compact cameras.
- Brushless engines technology. 7075 Avional structure and rotating electronic connections.
 - Second operator management option.
 - Adjustable speed with sharp and smooth movement.
 - Automatic vertical and horizontal positioning presets.
 - "Follow Mode" allows to lock with flight direction.
 - 360° motion on pan/tilt.
 - REC/STOP remote function.

- CONTROL SYSTEMS**
- Radio control transmitter with manual and assisted mode.
 - Rugged ground station to set up the autonomous flight, image preview and information on a 7" Android tablet.
 - Ip 67 briefcase
 - LCD Monitor for remote image preview and OSD flight information.

- FLIGHT PLANNING THROUGH PROPRIETARY APP CONTROLLER**
- Intuitive and efficient flight planning software developed by Italdron with remote shutter tools optimized for aerial photogrammetry and other applications. Planning software for PC and Android devices with customizable mission parameters. Possibility to add plug-in for future functionalities and applications.