

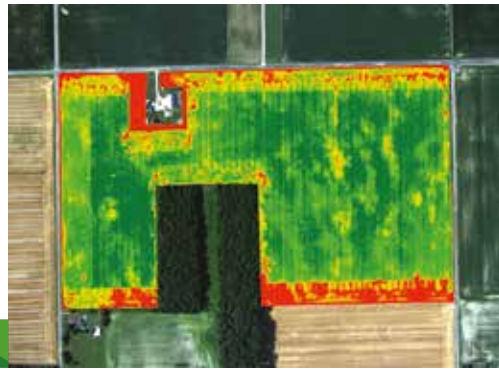
3DRECONSTRUCTION



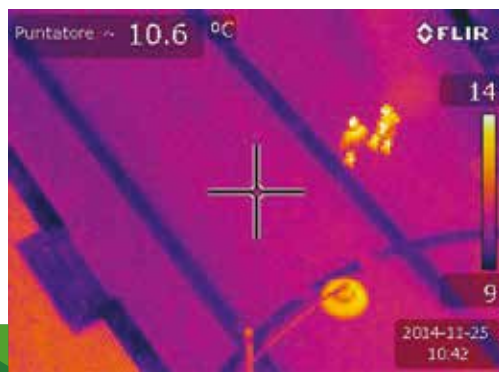
AERIALMAPPING



PRECISIONFARMING



AERIALSURVEYING



AERIALFILMING



Italdron

ITALDRON SRL  
Via Faentina 175/A (Centro Mir)  
48124 - Fornace Zarattini (RA)

Tel: + 39 0544 771407  
E-mail: info@italdron.com

WWW.ITALDRON.COM



Geozone AG, Oberdorfstrasse 8, CH-8153 Rümlang  
Tel: +41 (0)44 817 01 21, Fax: +41 (0)44 817 01 22  
www.geozone.ch, Email: info@geozone.ch



Italdron  
another point of view

BIGONE 8HSEPRO





The BIGONE 8HSE PRO has been developed to provide the best performances both in video shooting and survey through stability, reliability and high safety standards.



**SAFE**  
Standard equipment automatic safety parachute

**REDUNDANT**  
Fault tolerance guaranteed by double electronics and sensors

**VERY POWERFUL**  
Up to 10 Kg. Payload

**LONG ENDURANCE**  
Improved flight time up to 50 min.

**ADVANCED FLIGHT**  
Easy and efficient auto-flight planning tools optimized for aerial photography



**CUSTOMIZABLE**

**SPECS**  
 Payload: 10 Kg  
 Max. takeoff weight (MTOW): 23Kg  
 Dimensions: 140x140x70 cm  
 Gimbal dimensions: 35x23x38 cm  
 Operating temperature: -5° + 40°  
 Operating humidity: 0% - 100%  
 Wind resistance: 12 m/s  
 Continuative flight time: 15'-50'  
 Data Link: 2,4 digital GHz with frequency hopping  
 Max. height: 150 metres (electronically limited)  
 Max. range: 1,5 Km (LOS)  
 Max. speed: 10 m/s  
 Vertical speed: 5 m/s (electronically limited)



**UAV**

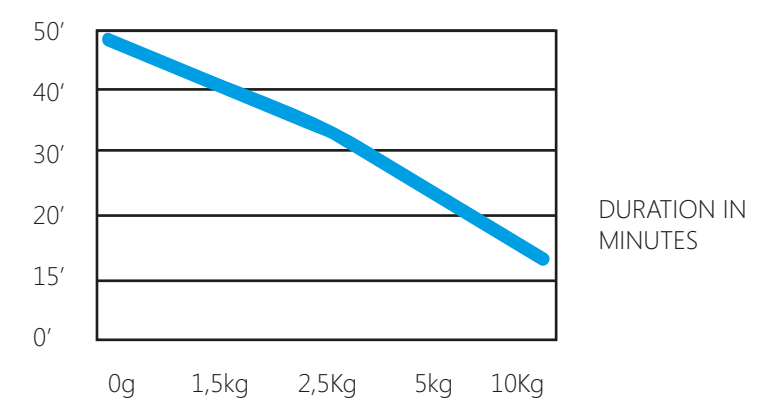
- Eight high efficiency brushless motors and carbon propellers.
- Fast folding arms, carbon fiber frame for easy transport.
- Standard equipment automatic safety parachute .
- Redundant auto pilot provided with internal inertial platform, GPS, barometer, Data link equipped with:
  - RTH (return to home) with auto landing, auto take-off and position hold functions.
  - GPS Waypoints configuration for autonomous flight missions.
  - Flight planning software to perform "grid and survey" missions for georeferenced aerial photogrammetry.
- Telemetric Data link for flight information and remote control.
- Flight mission recording stored on memory card.



**GIMBAL**  
 Three axes stabilized – remote controlled Gimbal developed for a number of cameras.

- Brushless engines technology. 7075 Avional structure.
- Second operator management option.
- Adjustable speed with sharp and smooth movement.
- Automatic vertical and horizontal positioning presets.
- "Follow Mode" allows to lock with flight direction.
- 360° motion on pan/tilt.
- REC/STOP remote function.

**FLIGHT TIME RELATED TO PAYLOAD**



**CONTROL SYSTEMS**

- Radio control transmitter with manual and assisted mode.
- Rugged ground station to set up the autonomous flight, image preview and information on a 7" Android tablet.
  - Ip 67 briefcase.
  - Lithium battery powered ground controller with flight information.
- GCS Control: Parameter control software, built on Android tablet to set waypoints and flight settings.



Compact and versatile platform, customizable for different applications.



Main professional sensors for survey, video or photogrammetric uses are supported.



Survey grid with geotag integrated tools.



Authority approval according to ENAC regulations. A flight manual is provided.



Fast tech-support.



Proven platform on flying training courses.

**RED EPIC**



**SONY ALPHA 7S / R**



**SUPPORTED PAYLOAD**

**LASER SCAN**



**ALEXA MINI**



**THERMAL CAMERA FLIR VUE/VUE PRO**



**MULTISPECTRAL CAMERAS**



**FLIGHT PLANNING THROUGH PROPRIETARY APP CONTROLLER**  
 Intuitive and efficient flight planning software developed by Italdron with remote shutter tools optimized for aerial photogrammetry and other applications. Planning software for PC and Android devices with customizable mission parameters. Possibility to add plug-in for future functionalities and applications.

The information contained in this catalog are purely indicative and subject to changes.